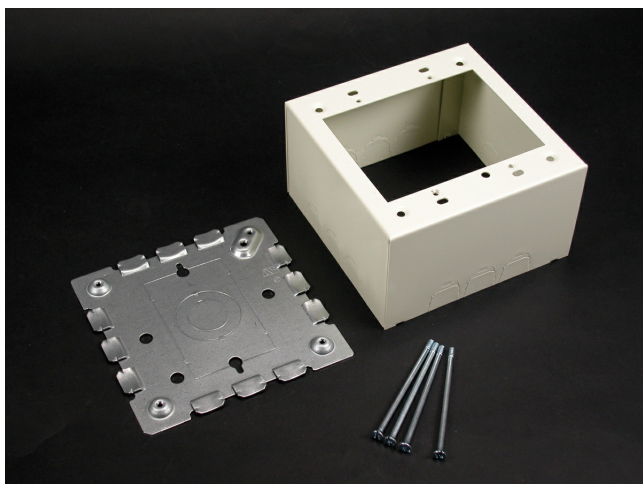




Wiremold  
500/700 Two-Gang Deep Switch and Receptacle Box Fitting  
Part No. 5744S-2WH



Designed especially for use in the installation of signal system and alarm wiring. Base has 1/2" trade size KOs. Larger gang boxes available by special order. Two-gang: 4 3/4" L x 4 3/4" W (121mm x 121mm). Accepts NEMA double-gang standard faceplates. NOTE: Certified to Canadian Safety Standards for sale in Canada. When ordering these products, change the "V" color prefix to "vc" or the "WH" color suffix to "WHC" to denote the Canadian versions.

## Features & Benefits

Designed especially for use in the installation of signal system and alarm wiring. Base has 1/2" trade size KOs. Larger gang boxes available by special order. Two-gang: 4 3/4" L x 4 3/4" W (121mm x 121mm). Accepts NEMA double-gang standard faceplates. NOTE: Certified to Canadian Safety Standards for sale in Canada. When ordering these products, change the "V" color prefix to "vc" or the "WH" color suffix to "WHC" to denote the Canadian versions.

## Specifications

### General Info

Product Line	Wiremold	UPC Number	786776562941
Country Of Origin	United States	Application Sector	Residential/Commercial
Standard	cULus Listed Raceway: File E4376 Guide RJBT. Fittings: File E4751 Guide RJPR. Meets Article 386 of NEC. Meets Section 12-1600 of CEC.	Type	Raceway

### Buy American Act Compliance

NAFTA	Yes
-------	-----

### Additional Information

RoHS Conformant	Yes	Product Environmental Profile	Yes
-----------------	-----	-------------------------------	-----

### Technical Information

Voltage	600 V
---------	-------