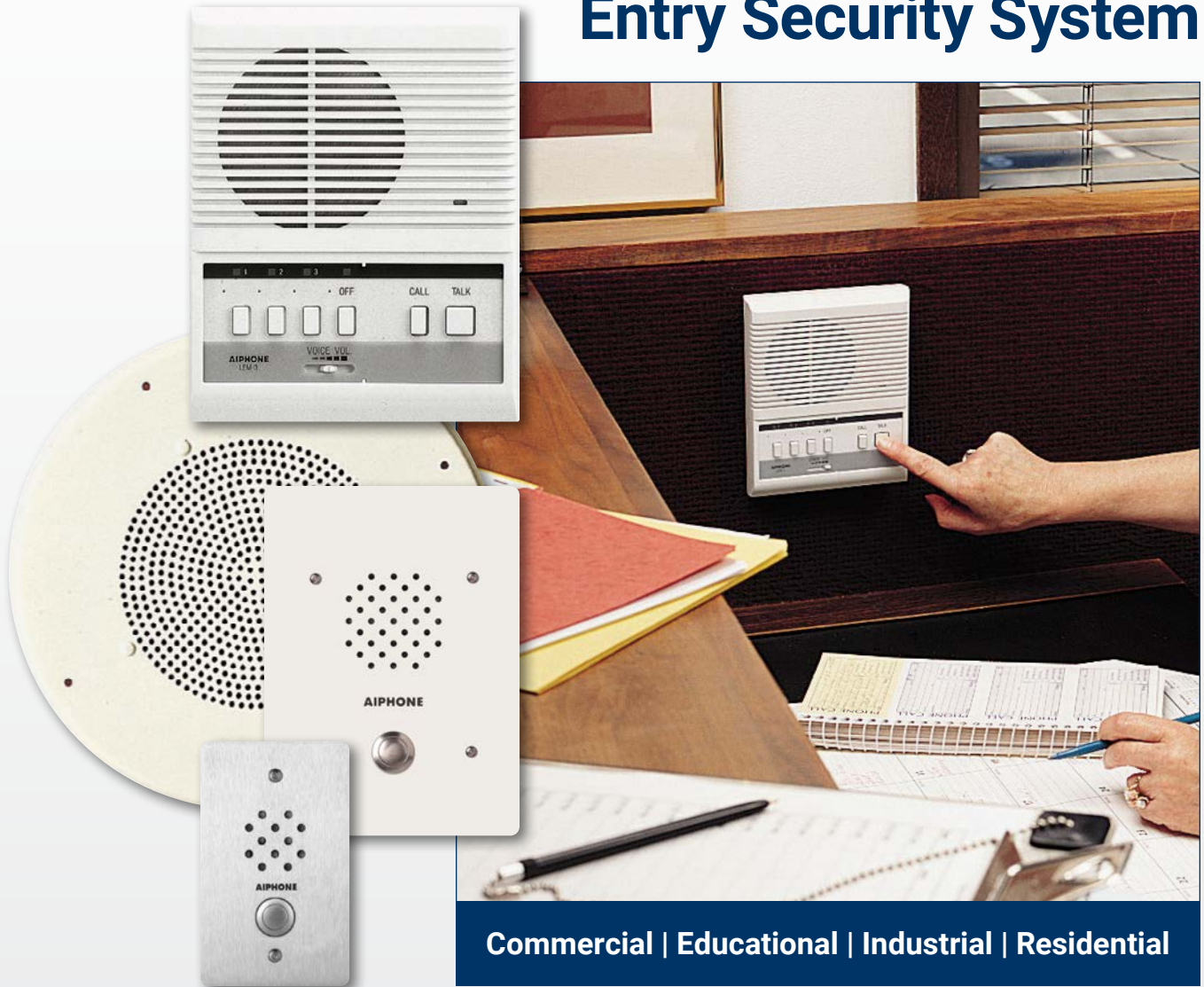




LEM Series
**Communication, Paging, and
Entry Security System**



Commercial | Educational | Industrial | Residential

Components

Door/Sub Stations: mix and match up to 3 (includes door stations, sub stations, speakers, and paging adaptors)



LE-D
Audio Door Station
• Plastic chassis
• Surface mount
4-3/4" H
3-7/16" W
1-1/8" D



LE-SS-1G
Audio Door Station
• Stainless steel panel
• Flush mount
(fits 1-gang box)
4-1/2" H
2-3/4" W
2-1/2" D (back box depth)



LE-DA
Audio Door Station
• Stainless steel cover
• Flush mount
(fits 2-gang box)
4-1/2" H
4-9/16" W
2-1/2" D (back box depth)



LE-SS/A
Audio Door Station
• Stainless steel panel
• Flush mount
(fits 2-gang box)
4-3/4" H
4-3/4" W
2-1/2" D (back box depth)



LE-SSR
Audio Door Station
• Red mushroom call button
• Stainless steel panel
• Flush mount
(fits 2-gang box)
4-3/4" H
4-3/4" W
2-1/2" D (back box depth)



LS-NVP/C
Audio Door Station
• Powder-coated steel panel
• Flush mount
(fits 3-gang box)
7-1/2" H
5-1/2" W
2-1/2" D
(back box depth)

NOTE: Aiphone recommends a 2-1/2" minimum back box depth for all flush mount door stations.



LE-A
Audio Sub Station
• Surface mount
6-1/4" H
5-1/8" W
2" D



LE-AN
Privacy Audio Sub Station
• Surface mount
• Privacy button
6-1/4" H 5-1/8" W 2" D



LE-B
Audio Sub Station
• Semi-flush mount
8-1/4" H 6" W 2" D
(9/16" goes inside wall)



LE-BN
Privacy Audio Sub Station
• Semi-flush mount
• Privacy button
8-1/4" H 6" W 2" D
(9/16" goes inside wall)



SP-20N/A
Ceiling Speaker (requires NP-25V)
• 20Ω
• Indoor use
• Flush mount
Diameter: 12-7/8" Baffle Diameter: 8"



BA-1
Paging Adaptor
(requires one amplifier per paging zone – use MD35M, MD60M, or MD120M)
4-1/8" H 2-1/2" W 1-1/2" D

Master Stations: select 1



LEM-1
1-Call Audio Master Station
(for applications using one door/sub station)
• Surface mount
6-1/4" H
5-1/8" W
2" D



LEM-3
3-Call Audio Master Station
(for applications using two or three door/sub stations)
• Surface mount
7-1/8" H
5-5/8" W
2-3/16" D

Power Supply (required for system)



SKK-620C
6V DC, 200mA
Power Supply

Accessories



KMB-45
45° Mullion Mounting
Bracket for LE-D



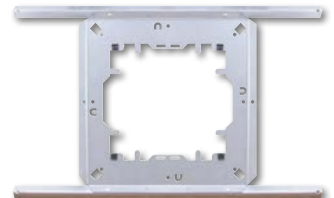
SBX-1G
Surface Mount
Box for LE-SS-1G



SBX-2G/A
Surface Mount
Box for LE-DA,
LE-SS/A, or LE-SSR



SBX-NVP/A
Surface Mount
Box for LS-NVP/C



SSB-2
Ceiling Support
Bracket for SP-20N/A



NP-25V
33μF, 25V Non-
Polarized Capacitor



LT-1
20Ω-to-8Ω Matching
Transformer

Specifications

Power Source	6V DC – use SKK-620C
Communication	Push-to-talk (simplex)
Door Release	N/A
Wire Type	Door Station or Sub Station to Master Station: 2-cond., overall shield – use Aiphone #822202 or #821802
Distance	Door Station or Sub Station to Master Station: 650' (22 AWG) 1,570' (18 AWG)



Aiphone Corporation
HEADQUARTERS
6670 185th Ave NE
Redmond, WA 98052

Aiphone Corp. East
REMOTE OFFICE
535 Route 38 East, #340
Cherry Hill, NJ 08002

Aiphone Corp. Canada
REMOTE OFFICE
400 St. Martin West Blvd., #200
Laval, QC H7M 3Y8

Customer Service & Technical Support (800) 692-0200

LEM Series Brochure | 10/2021

SECURITY COMMUNICATION SOLUTIONS
aiphone.com

© 2021. All Rights Reserved.
The information in this brochure is subject to change without notice.